



Release Highlights for BluePrint-PCB Product Version 3.0

Introduction

BluePrint V3.0 Build 571 is a rolling release, containing defect fixes for 3.0 functionality.

Defect fixes for BluePrint V3.0 Build 571

Product/Project	ID	Description
Assembly Tools	54431	Fixed the display of Pin Numbers and Pads in Exploded Views
Assembly Tools	54445	Exploded View callout display is visible in other exploded views when they overlap
Assembly Tools	54460	Assembly Variant Table does not execute for this customer design database
Assembly Tools		Exploded View is not properly clipped when the callout is a rectangle and the pictorial is a circle shape.
Automation API	54446	SaveAs API method sometimes creates unnecessary folder
Automation API	54419	Enhancement to add a new method for importing a Parts List
ECO	54425	ECO update with new layers. New layers cannot be referenced when layers ordered in PCB View.
Export PDF	53984	Export PDF drops copper voids and can create slivers for imported gerber files.
Export PDF		Resulting PDF displays incorrect exploded view for this design.
Fabrication Tools	54359	User Defined Drill Table settings are not saved to profile for reuse
Import Gerber	54186	Gerber import can drop copper voids
Import Gerber	54437	Gerber created by Altium cannot be read by BluePrint.
Panel Array Tools	54453	When the user copies the web route parameters from the first to second image in a panel, the mill tabs are not always copied to the correct locations.
Panel Array Tools		Mill tab cannot be renamed using the Mill Tab Manager in this design
Search Tool	54449	Improved the Search Tool to find all instances of overlapping reference designators
Tools Options	54448	Option settings for Callout width not retained
User Interface	54418	If you save a PDF to your element gallery you can not use it unless the PDF is saved on your local drive.
User Interface	54406	Hyperlink window display is too small to read text when selecting callout to note

New Functionality in V3.0

The following functional enhancements are contained in BluePrint Version 3.0:

- ✓ Panel Array Enhancements
 - Flip One-up Images
 - Ease of Use for Flipping and Rotating One-up Images in Place
 - Orientation Markers for Preview Window
 - Display PCB View Layers Based on Flipped One-up Image
 - Panel Scale
 - Corner Chamfer Setting
 - Fiducial and Pinning Hole Relative Placement
 - Fiducial and Pinning Hole Board Relative Placement Mode
 - Web Route and Score Line Merge
 - Web Route Merge Inside One-up Images
 - Edit Panel Mode Indicator
 - Score Line Snapping to Board Outline
 - Dimensioning Snap to Mill tab
 - Placement Snap to Mill tabs

- ✓ Search and Report Floating Dimensions
- ✓ Search and Report Import Differences after ECO
- ✓ Search and Report Overlapping Reference Designators
- ✓ Merge BPD File Support
- ✓ Align Support for Dimensions
- ✓ Align Support in Coordinate Dimension Commands
- ✓ New Tool Options for Search Highlight Color
- ✓ New Search Option for Current Sheet
- ✓ New Polygon Exploded Views
- ✓ Ability to place the Exploded View Pictorial on different sheet than the Callout
- ✓ PCB View Display Order Control
- ✓ Disperse and Align Callouts
- ✓ Save and Restore User Interface Customizations
- ✓ Passing Pinning Holes, Fiducials and Mill Tab perforations to CAM350

Details

Panel Array Enhancements - BluePrint Version 3.0 greatly enhances the Panel Array solution by integrating feedback from many V2.0 users.

Flip One-up Image

In Edit Panel mode, when a stepped image is selected in a panel, the Transform>Flip commands set a new status for the stepped image that virtually maps top to bottom layers and swaps symmetrically all internal layers. The flipped status appears in the Size tab for the Format Panel dialog for the stepped image.

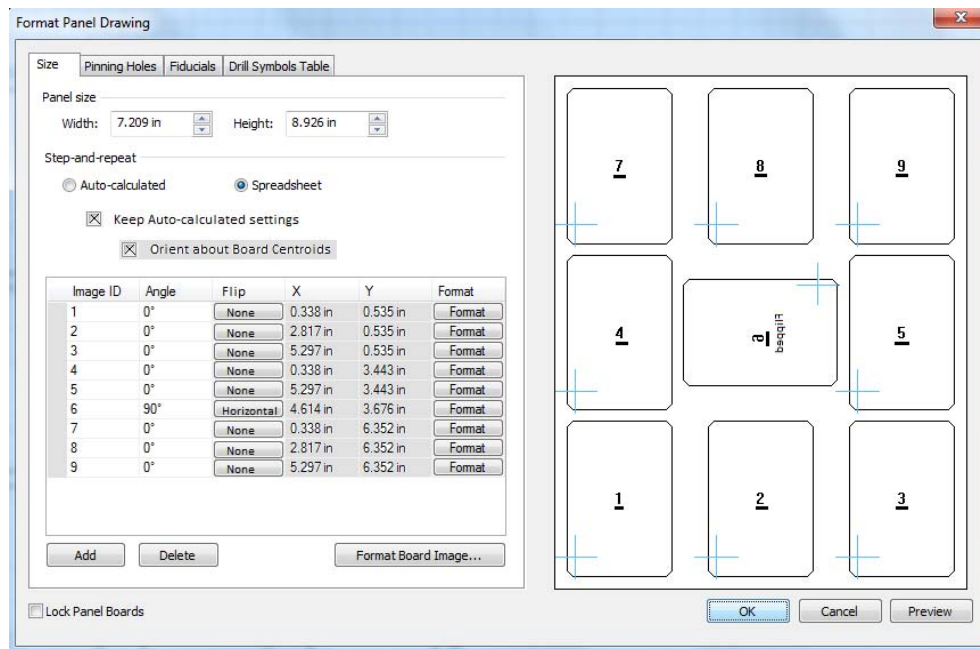
Ease of Use for Flipping and Rotating In Place

The *Size* tab in spreadsheet mode of the Format Panel Array dialog provides edit controls to flip or rotate a stepped image “in place” (about its center.) The user does not need to adjust the stepped image origin. On the *Size* tab for the Spreadsheet view, the stepped image list includes a new combo box for flipping a stepped image vertically or flipping horizontally.

On the *Size* tab, a new checkbox has been added under the radio buttons in the Spreadsheet view: “[x] **Keep Auto-calc settings**”. When this new checkbox is enabled, the spreadsheet controls for origin X and Y are disabled. When the Keep Auto-calc checkbox is enabled, all rotations and flipping are about the image centroids. When the Keep Auto-calc checkbox is enabled, all image spacing and board margin spacing are based on a spacing rectangle where the spacing rectangle height is the maximum height of all image instances in the corresponding row and the spacing rectangle width is the maximum width of all image instances in the corresponding column. When the Keep Auto-calc checkbox is enabled, no warning message appears when switching from spreadsheet to auto-calc view.

When the Keep Auto-calc checkbox is disabled, the function matches the BluePrint-PCB 2.2.1 function. The Keep Auto-calc checkbox is automatically disabled when the user modifies any image location or orientation in Edit Panel mode. When the Keep Auto-calc checkbox is disabled, a second new checkbox is enabled for “[x] **Orient about Board Centroids**”. The Orient checkbox controls whether or not rotations and flipping will be about image centroids when the auto-calc mode is not enabled. When the Keep Auto-calc checkbox is enabled, the new “Orient about Board Centroids” checkbox is disabled, since all rotation and flipping will be about the centroids in auto-calc mode.

NOTE: For example, for a 3x3 array and a rectangular board profile, if the center image is rotated by 90 degrees and the new checkbox is enabled, then a square image will be used for the center column image spacing (both x and y). Rows and columns are retained and the smallest rectangular panel footprint is achieved.



Orientation Markers for Preview Window

The *Size* tab preview window now displays orientation markers in the stepped images that are representative of the stepped image orientation. The orientation markers are the stepped image numbers. All image numbers are underlined to emphasize the orientation. For flipped stepped images, the orientation markers are mirrored and the word “Flipped” is displayed. For rotated stepped images, the orientation marker are rotated.

Display PCB View Layers Based on Flipped One-up Image

When layers are displayed in a panel drawing for a flipped stepped image, the layer visibility control virtually swaps all layers based on the flipped layer mapping. For example, when displaying the top layer copper for a panel, the flipped stepped image display will show the bottom layer copper.

Panel Scale

Panel drawing elements support scaling in the same way PCB View scaling is supported. The *Size* tab for panels has new controls for scaling that match the capabilities of PCB Views. The scale is stored in the Panel template when saved to the Element Gallery, independent of panel size. Panel dimensioning works with scaled Panel Drawings in the same seamless manner as dimensioning works with scaled PCB views.

Corner Chamfer Setting

The new *Corner Chamfer* tab in the Format Panel Dialog supports corner chamfering definitions for the four (4) outside corners of the Panel outline. The corner shape (square, round or chamfer) and size of the chamfers will be specified. Each of the four panel corners can be selectively chamfered or not. There is one dimension that will specify the chamfer size for all selected corner chamfers. These parameters are stored in the Panel template when saved to the Element Gallery, independent of panel size.

Fiducial and Pinning Hole Relative Placement

When saving a Panel Drawing template to the Element Gallery, placement for fiducials and pinning holes are supported in relative mode, independent of panel size.

Fiducial and Pinning Hole Board Relative Placement Mode

When creating a Panel Drawing, placement for fiducials and pinning holes support a new relative mode, where placement is relative to the single-up board image. Fiducials and pinning holes are placed relative to the CAD Origin. This feature supports panel fiducials (e.g., X out fiducials) that are linked to stepped images and placed relative to stepped image orientation.

Web Route and Score Line Merge

The Merge Web Route command now recognizes score lines that travel through web routes, route segments and route arcs. The Merge Web Route command removes the score line graphics in the web route region.

Web Route Merge Inside One-up Images

The Merge Web Route command recognizes when web route, route segments and route arcs overlap the region inside the one-up image board outline. The Merge Web Route command remove the web route graphics that overlap the region inside the board outline of any one-up image.

Edit Panel Mode Indicator

For Edit Mode indication, there is a new graphic icon in the status bar. The Edit Mode indicator indicates whether you are in edit mode for the respective panel drawing, drawing shape or template that supports edit mode. A tool tip on the Edit Mode icon indicates which type of shape or template is in edit mode.

Score Line Snapping to Board Outline

When a Score Line is selected and dragged by a midpoint on the Score Line, the snapping indicators and snapping function now recognize the board outline.

Dimensioning Snap to Mill Tab

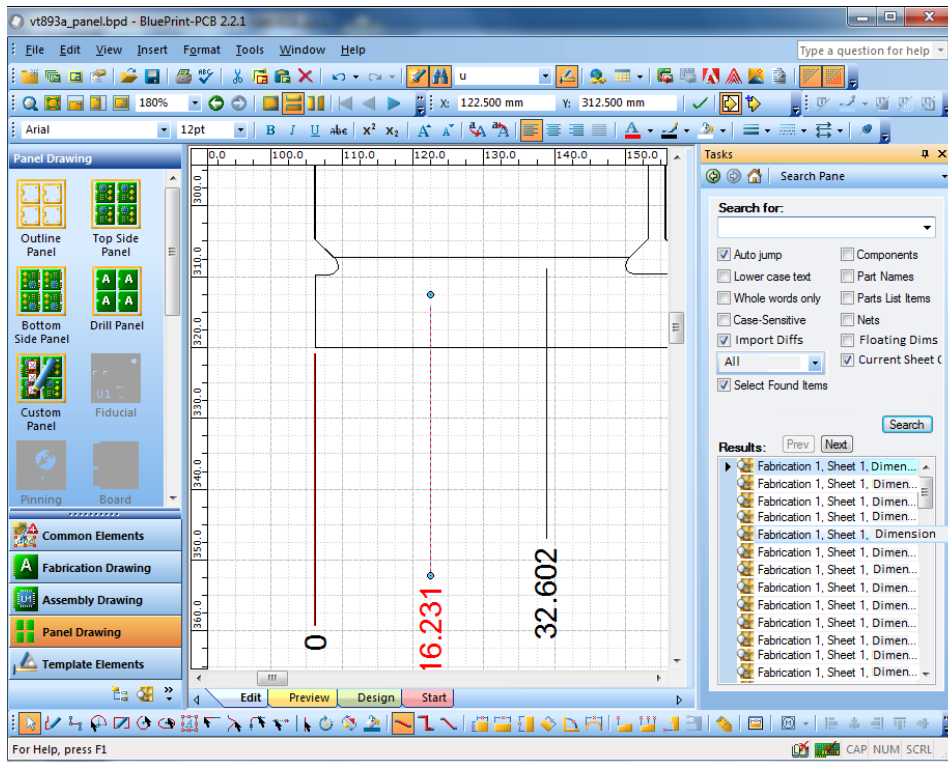
When dimensioning to a Mill Tab, there is a clear indication that the snapping is to the Mill Tab as opposed to snapping to adjacent geometries.

Placement Snap to Mill Tab

When placing a Mill Tab, by dragging an existing Mill Tab, the snapping indications include snapping to other existing Mill Tabs in the Panel.

Floating Dimensions

The Search window now supports finding floating dimensions across the entire drawing. A floating dimension is a dimension with an end point that is not placed on top of an object or edge on the drawing sheet for which snapping in BluePrint-PCB can occur. The list of objects for which snapping can occur in BluePrint-PCB include: all BluePrint drawing elements, the board outline (including cutouts and voids), drills, pins, vias and drawn items in the CAD design.

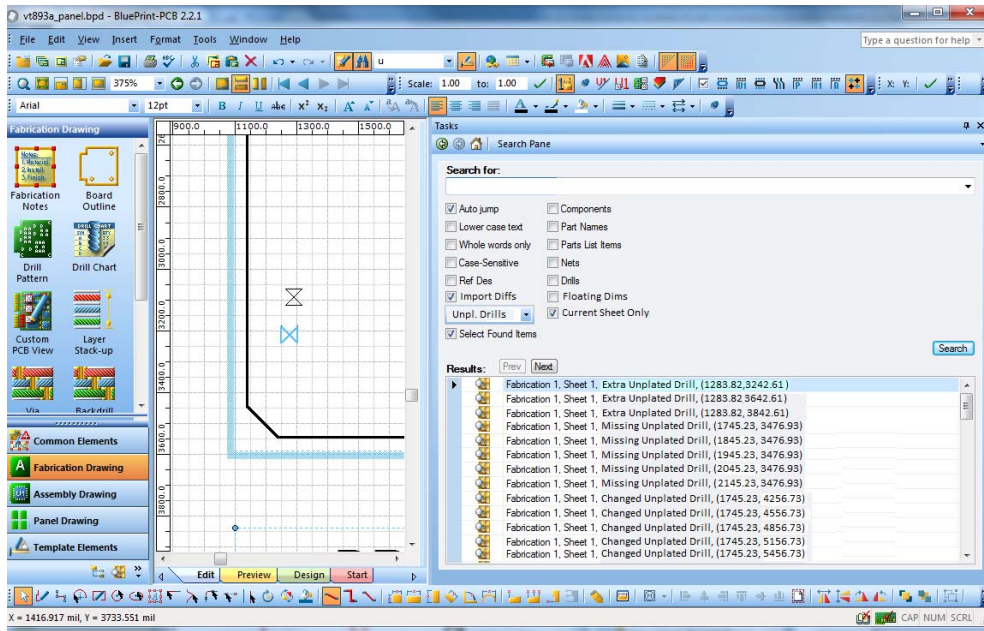


Import Differences

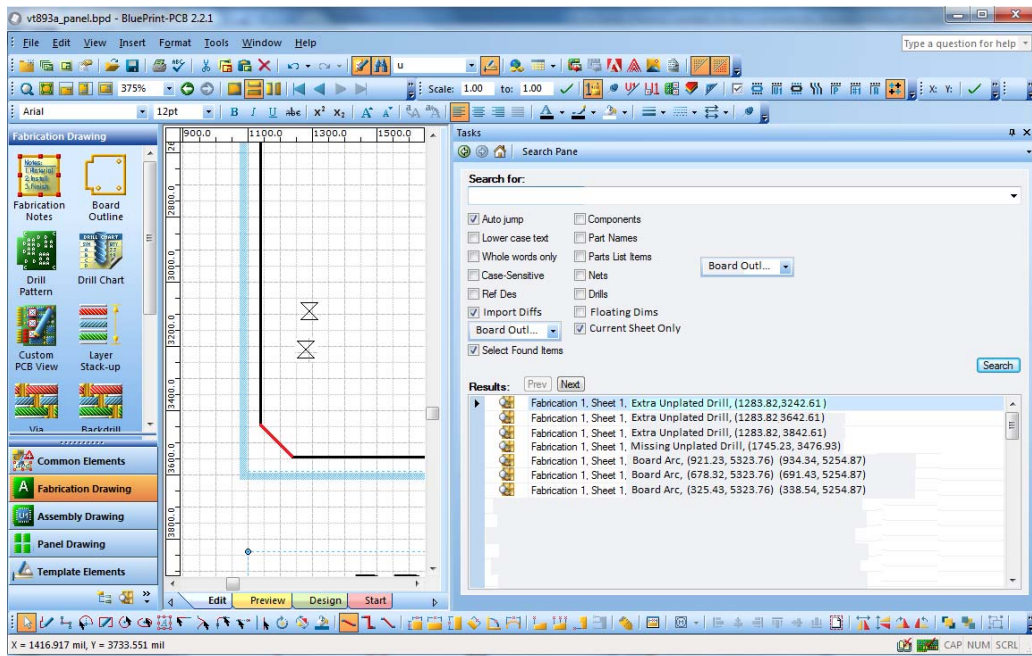
The Search window now supports finding import differences across the entire drawing. Import differences are calculated during the Import CAD command, including all ODB++ import commands and PADS ASCII imports. The import differences include board outline differences and unplated tooling hole differences. A new combo box supports selection of import difference types: **“All”, Board Outline” or “Unpl. Drills”**. For board outline differences, differences in individual segments and arcs in the board outline are reported. For unplated tooling holes, extra, missing and mismatched tooling holes are reported. Only unplated through holes and unplated slots are compared for the current CAD design and the imported CAD design. In addition, hole size, slot length and slot orientation are used for comparison. Plated holes, start and end layers, and other layer attributes are not used for comparison. Extra drills are drills or slots that appear at a location and orientation in the imported CAD data, but do not appear at the same location and orientation in the current CAD data. Missing drills are drills or slots that appear at a location and orientation in the current CAD data, but do not appear at the same location

and orientation in the imported CAD data. Mismatched drills are drills or slots that appear at the same location and orientation, but the size parameter is different.

Drill differences are shown below.

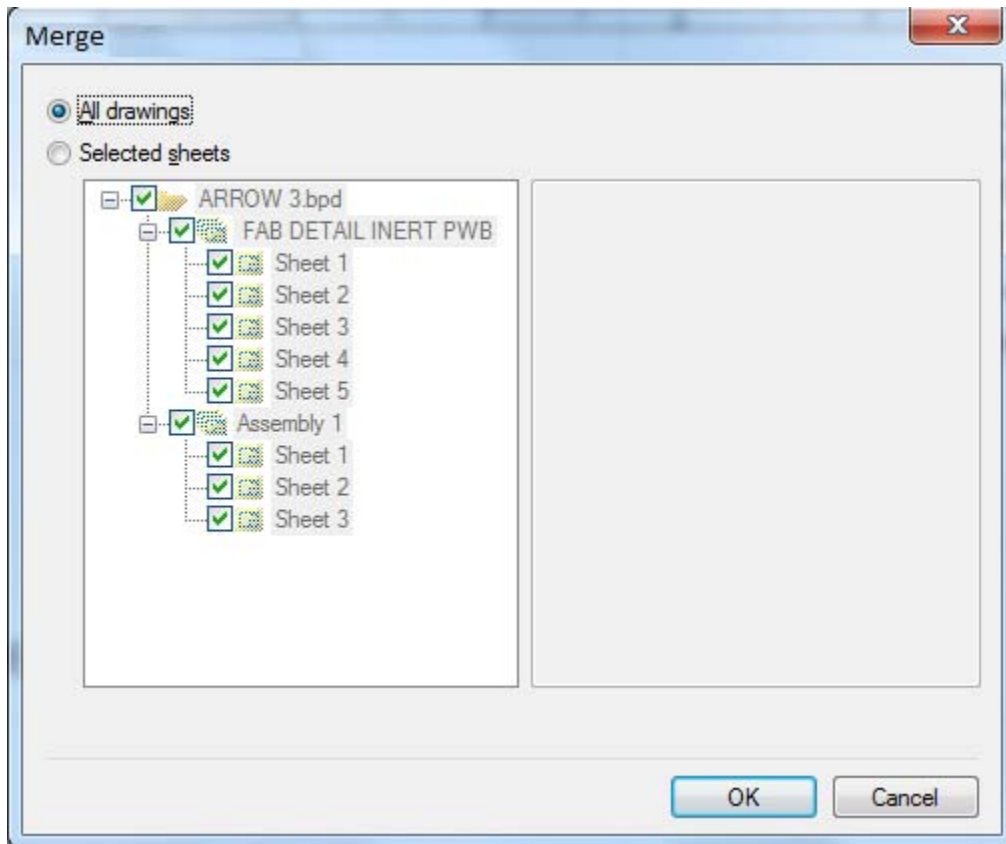


Board outline differences are shown below.



Merge BPD File Support

The new File Merge command supports merging two BluePrint-PCB files (*.BPD). The File Merge command asks the user to browse to the BPD file to merge into the currently open BPD file. The CAD Data from the currently open BPD file is retained when merging the BPD files. No existing sheets or drawing elements in the currently open BPD file are modified during the merge operation. A new dialog allows selection of specific drawings and sheets to be added to the currently open BPD file. The drawings and sheets from the selected BPD file will be appended to the end of the drawing sheet navigation tree for the currently open BPD file. If individual sheets are selected without an owning drawing, these individual sheets will be appended at the end of the last drawing of the same type. For example, if an individual Fabrication drawing sheet was selected, that sheet would be appended to the end of the sheets of the last Fabrication drawing in the current BPD. If no Fabrication drawing exists in the current BPD, a new Fabrication drawing is created. If drawings exist with the same names in the current BPD file as the new drawings that will be appended to the BPD file, the new drawing names are modified to be unique in the BPD file.



The user is warned if the CAD data source is not identical (file name and date) for both BPD files. The drawing sheets that are appended to the currently open BPD file will be refreshed with the CAD data from the current BPD file.

Align Support for Dimensions

The Align command now supports aligning of Coordinate Dimension text boxes. The area selection operation has been updated to support selection of Dimension text boxes.

Align Support in Coordinate Dimension commands

The Horizontal and Vertical Coordinate Dimension commands now support a new alignment mode, where successive Coordinate Dimension placements will align the Dimension text with the text for the Coordinate Origin Dimension text. The Tools Options > Drawing > Dimensions > Coordinate Dimensions > Text tab have a new checkbox (“ Align Dimension Text”) which when enabled aligns text with the Coordinate Origin Dimension text. Alignment of coordinate dimensions only occur for the same orientation (left, right, top or bottom) for which the coordinate origin dimension exists. If no coordinate origin dimension exists for a newly added coordinate dimension, then no alignment will occur. For example, if the active vertical coordinate origin dimension is on the left side of the board outline and a new vertical coordinate dimension is added and oriented on the right side of the board outline, then no alignment will occur.

Command Icons for new Search commands

There are new commands available in the customization dialog for Search Floating Dimensions, Search Import Unplated Drill Differences and Search Import Board Outline Differences.

New Tools Option for Search Highlight Color

A new option has been added to the Tools > Options > Environment>Edit/View tab for selection of the Search results highlight color. This color is used to highlight items as they are selected in the Search window pane.

New Search Filter for Current Sheet

A new Search pane option has been added to filter searching to the current (“active”) sheet. If the new checkbox (“ Current sheet only”) is enabled, then search results will only appear for the currently active sheet.

New Exploded View Functionality

By default, the exploded view pictorial and callout shapes are circles or rectangles. However, you can now define any polygon and create an explode view. This is very useful when you want to magnify specific data items in a PCB View while not displaying other items which are nearby. To do this you first use BluePrint's drafting tools to define (draw) the polygon and then you select the Make Exploded View command to create the Polygon Explode View.

Use BluePrint's drafting tools from the Common Elements palette or the Drafting Toolbar to define (draw) the polygon shape on your drawing sheet. The polygon shape can be any combination of lines and arcs, but must be a closed polygon. Select the polygon you have defined and select the Make Exploded View command from it's

context menu (RMB). BluePrint creates an explode view with pictorial and callout sections using the polygon you defined.

When you first create an Explode View you define and display it on the same document sheet as the PCB View. However, you may want to move the magnified Explode View Pictorial to another sheet by itself or with other magnified views. Select the Explode View Pictorial that you want to move to another sheet. Select the Move the Pictorial to Sheet command from the context menu (RMB). A dialog will appear that shows you the sheets in your document. Select the sheet you want to move the Explode View pictorial to. Select OK on the dialog to complete the command. The pictorial will be moved to the new sheet. The pictorial and its callout are still linked (even though the line representing the link is no longer displayed.) You can still move or resize the callout and the associated pictorial will automatically update. You can also move and resize the pictorial on the new sheet.

If you have several Explode View pictorials that have been moved to different sheets then it may be difficult to determine which callout is associated with the pictorial when you want to change the explode view. We have added commands to find the callout and associated pictorial. Select the Explode View Pictorial. Select the Go to Callout command from the context menu (RMB). BluePrint will find and navigate to the associated callout or, select the Explode View Callout and select the Go to Pictorial command from the context menu (RMB). BluePrint will find and navigate to the associated pictorial.

Finding Overlapping Reference Designators

By default, BluePrint creates and displays reference designators in the center of each component's outline. Depending on the size of the reference designator text font, the size of the component, and the placement of components, this can result in reference designators that overlap. An overlapping reference designator is a reference designator text box that overlaps another reference designator text box or overlaps a component outline. You may want to move and clean up overlapping reference designators.

BluePrint's Search tool quickly finds and lists overlapping reference designators. Select the Search tool. The Search tool button can be found on the Standard Toolbar and is represented by a binocular graphic. The Search Pane will appear on the right side of the BluePrint application. Select the Overlapping Ref Des checkbox. Select the Search button. Each overlapping reference designator instance will be listed in the Results section of the Search tool. Each instance is a hyperlink. When you select a hyperlink, BluePrint will automatically navigate to that reference designator on a PCB View so you can see the overlapping issue visually.

PCB View Display Order Control

BluePrint allows you to control the display order for data items in a PCB view. In other words, you can specify whether a route is displayed above or below a pad, component, via, drill, copper, reference designators, etc.... You can also control the layer display order.

BluePrint's Default Display Order

By default, BluePrint uses the following formula when displaying a PCB view: If Object X is on Layer X and Object Y is on Layer Y and Layer X is less than Layer Y (ie Layer 1 is less than Layer 2) than Object X is displayed above Object Y. If Layer X is the same as Layer Y (ie the Objects X and Y are on the same layer) than BluePrint uses the following display order (the first object is displayed on top and the last object is displayed on bottom):

- BluePrint Reference Designator
- Drills
- Component Outlines
- Pads
- Nets
- Vias
- Copper
- Lines
- Text
- CAD Reference Designators
- Other (Board Outline, Polarity Markers, Test Points, Component Fill)

Changing BluePrint's Default PCB View Display Order

Perhaps you prefer that the routes are always displayed above the pads or that the pads are always displayed above the component outlines. You can change BluePrint's default display order and create your own. Each time you place a PCB View your new default display order can be used.

1. Select the menu Tools – Options – Drawing – PCB View. In the bottom half of this Options dialog you will see BluePrint's CAD Object Display Order. The display order is listed top to bottom where the objects at the top are displayed above the objects listed below them.
2. You can now select an Object and use the buttons on the right to move that object in the display order (Move to Top, Move Up, Move Down, Move to Bottom).
3. Select Apply or OK on the Options dialog once you have completed your display order changes. Your new display order will be used when you place a new PCB View. The new display order is saved and will be used each time you invoke BluePrint.

Note: PCB Views that already exist in your documentation will not be updated to the new default display order. BluePrint allows you to define different PCB Views with different display orders. When you change BluePrint's default display order then that

new display order will be used when you place a new PCB View, but BluePrint does Views you have already placed.

Changing a PCB View's Layer Display Order

To change the layer display order such that one layer is displayed on top or below another:

1. Select the Format PCB View command
2. Select the PCB CAD Data tab
3. Select the Advanced button.
4. Select the Layers tab.
5. Select the CAD Object Display Order button.
6. Select the CAD Layer Display Order tab
7. Select a layer in the layer display order list and use the buttons on the right of this dialog to move the layer up or down in the display order. Repeat until you have the layer order defined the way you want.
8. Select OK to accept the changes and close the CAD Layer Display Order dialog.
9. Select OK to to accept the changes and close the Customize CAD Data dialog
10. Select Preview or OK in the Format PCB View dialog to see the changes.

Changing a PCB View's Object Display Order

To change the display order of BluePrint PCB View objects on the same layer follow these steps:

1. Select the Format PCB View command
2. Select the PCB CAD Data tab
3. Select the Advanced button.
4. Select the Layers tab.
5. Select the CAD Object Display Order button.
6. Select the CAD Object Type Display Order tab.
7. Select the CAD Object type in the display list and use the buttons on the right of this dialog to move the CAD Object type up or down in the display order.
8. Select OK to accept the change and close the CAD Object Type Display Order dialog.
9. Select OK to accept the change and close the Customize CAD Data dialog
10. Select Preview or OK in the Format PCB View dialog to see the change.

Changing a PCB View's Object Display Order independent of Layer

To change the display order of BluePrint PCB View objects regardless of what layer those objects are defined on:

1. Select the Format PCB View command
2. Select the PCB CAD Data tab
3. Select the Advanced button.
4. Select the Layers tab.
5. Select the CAD Object Display Order button.
6. Select the CAD Object Type Display Order tab
7. Select the Display CAD Objects Grouped by Type checkbox on the lower left of this dialog.
8. Select the CAD Object type in the display list and use the buttons on the right of this dialog to move the CAD Object type up or down in the display order.
9. Select OK to accept the change and close the CAD Object Type Display Order dialog.
10. Select OK to accept the change and close the Customize CAD Data dialog
11. Select Preview or OK in the Format PCB View dialog to see the change.

Disperse and Align Callouts

To Disperse a Selection of Callouts:

BluePrint allows you to select a number of callouts and to disperse those callouts along a horizontal or vertical plane that you define. By default, the dispersion algorithm is based on the callout shape, leader and extension.

1. Select the Callouts that you would like to disperse.
2. Select the Disperse Horizontally or Disperse Vertically command from the context menu (RMB). The cursor will turn into a cross letting you know that you are now in the define dispersion plane mode.
3. Select the left mouse button (this point on the sheet will represent the upper left corner of the dispersion rectangle) and hold it down while you move the cursor to define the dispersion rectangle. Release the left mouse button and it's position will represent the lower right corner of the dispersion rectangle. The selected callouts will be dispersed, equally spaced, within the dispersion rectangle.

To Align a Selection of Callout Balloon Shapes :

BluePrint allows you to select a number of callouts and to align those callout balloon shapes along a horizontal or vertical plane without moving the leader line and extensions (ie without changing what the callouts are pointing to).

1. Select the Align only to Callout Balloon checkbox on the Tools-Options-Drawing-Callout dialog. Select OK to accept the option change.
2. Select the Callouts that you would like to align.
3. Select the Disperse Horizontally or Disperse Vertically command from the context menu (RMB). The cursor will turn into a cross letting you know that you are now in the define dispersion plane mode.
4. Select the left mouse button (this point on the sheet will represent the upper left corner of the dispersion rectangle) and hold it down while you move the cursor to define the dispersion rectangle. Release the left mouse button and it's position will represent the lower right corner of the dispersion rectangle. The selected callout balloon shapes, will be dispersed and aligned, equally spaced, within the dispersion rectangle. The leader lines and extension lines will remain in their original positions.

Save and Restore User Interface Customizations

BluePrint allows you to save and restore your user interface customizations. You can also share these saved customizations with other BluePrint users in your organization by simply importing the saved customization file.

To Save your User Interface Customizations:

The following steps assume you have already made your user interface custom changes.

1. Select the Tools - Customize command.
2. Select the Import/Export tab on the Customize dialog.
3. Select the Export to File button
4. Select the folder and enter the file name for your User Interface customizations.
5. Select Save to create the file.

To Restore your User Interface Customizations:

The following steps assume you have already saved your user interface custom changes to a file.

1. Select the Tools - Customize command.
2. Select the Import/Export tab on the Customize dialog.
3. Select the Import from File button
4. Browse to the folder and enter the file name for your saved User Interface customizations.
5. Select Open to restore the user interface settings.

To Re-Install User Interface Customizations after a BluePrint Upgrade:

If you have customized your user interface in BluePrint V2.0 or better and have upgraded to a newer version of BluePrint you can import the old user interface customizations into your new installation. BluePrint's user interface customizations are saved in your PC's registry. BluePrint allows you to import the older BluePrint registry keys into your new BluePrint version registry.

1. Select the Tools - Customize command.
2. Select the Import/Export tab on the Customize dialog.
3. If you have more than one BluePrint version installed then you will see a list of BluePrint versions to choose from with compatible registry settings. Select the version you want to import and select the Import Registry Settings button. BluePrint will update with the user user interface customizations.

Passing Pinning Holes, Fiducials and Mill Tab perforations to CAM350

BluePrint allows you to save and load your design into CAM350, the PCB fabrication and verification tool from DownStream Technologies. BluePrint has been updated to support passing of pinning holes and fiducials that are defined in BluePrint to CAM350 for fabrication and verification. Additionally, the drills associated with Mill Tabs that are defined in BluePrint are also passed to CAM350 for processing.

Defect fixes for BluePrint V3.0 Build 568

Product/Project	ID	Description
Import Variant	44422	Enhancement to support substituted part attributes for variants
Panel Array	54374	Enhancement to improve mill tab alignment with opposing mill tabs
Database	54385	Backward compatibility issue with reference designators in new exploded views
Fabrication Drawing	54359	User defined drill table settings were not being saved to the profile for sharing with other users
Import PADS	54401	Support for PADS 9.3
Automation API		Fixed Automation API for the triangle object
Import IPC 2581		Enhancement to import component heights
Export PDF		Fixed arcs which were exported to PDF incorrectly
Import PADS		Enhancement to support stroke fonts for japanese characters

Defect fixes for BluePrint V3.0 Build 564

Product/Project	ID	Description
Assembly Drawing Tools	54042	Default origin should be CAD Database, and should be way to change and make default
Assembly Drawing Tools	53977	PCB View Copy and Paste drops Attribute display
Assembly Drawing Tools	53800	Polygon exploded view does not display all BluePrint Ref Des in pictorial
Assembly Drawing Tools	53736	New Assembly Drawing - Board Assembly - Relationship and Part Data sections should be greyed
Assembly Drawing Tools	53605	Enhancement to create a Import CSV log file
Assembly Drawing Tools	53401	Enhancement to Sort by Ref Des in the Parts List
Assembly Drawing Tools	53147	Enhancement to find and better manage Overlapping Ref Des in a PCB View
Assembly Drawing Tools	44425	Enhancement to display a Explode View shape as any user defined closed polygon
Assembly Drawing Tools	44422	Enhancement to add Variant support for Substituted part attributes
Assembly Drawing Tools	44223	Enhancement to display a Explode View on a different sheet then it was originated
Automation API	54079	Automation method added to trap attempt to put text in graphics
Automation API	54017	Added method to add callout for note
Automation API	53989	Added description of color mask to the API documentaion
Automation API	53882	Support for VB2008
Automation API	53836	Added method to place nondefault pallet items
Automation API	53743	Support for Windows 7 64-bit
Automation API	53695	API support to insert an unexpanded reference
Automation API	53693	Enhancement to import data fields with no space between variable and text
Export PDF	53647	Drawing incorrectly scaled when exporting to PDF on this design
Export PDF	37849	Negative plane layers exporting to PDF incorrectly
Import BoardStation	53650	BoardStation import now supports more compex graphics of components outlines
Import Expedition	53726	Component Property Names with spaces are not parsed on import correctly
Import Expedition	50100	This specific design database crashes BluePrint on import
Import ODB++	54279	Zuken CR5000 ODB++ import: incorrect slots
Import ODB++	53914	Show tooling hole and outline difference on import
Import ODB++	53827	Import support for part names with spaces

Product/Project	ID	Description
Import PADS	54150	Fixed import of pad on this design
Import PADS	53986	Import warning for data beyond limits
Import PADS	53972	Multibyte character support
Import PADS	53727	Donut shaped pads are not supported on import from PADS
Import PADS	42555	PADS 2007 - CAD ref des does not display
Import Zuken	54189	CADSTAR ODB++ - slots rotated failure
Panel Tool	54211	Panel drawing: external gallery support
Panel Tool	53987	Panel Scale - Route and Arc segments do not scale when placed in scaled panel
Panel Tool	53850	Panel drawing causes all Drill Charts to be refreshed
Panel Tool	53731	Dimension does not snap to panel outline for this design
Panel Tool	53729	Step images occasionally move when setting pin visibility
Panel Tool	53728	Step Image occasionally moves when OK selected in Format Panel
Panel Tool	53718	Enhancement to support Flip Panels
Panel Tool	53714	Enhancement to align and snap to mill tabs
Panel Tool	53712	Enhancement to better indicate when user is snapping to a mill tab
Panel Tool	53711	Enhancement to indicate that user is in Edit Panel mode
Panel Tool	53709	Enhancement to indicate orientation in Panel Preview
Panel Tool	53707	Enhancement to save Panel with relative hole and fiducial locations
Panel Tool	53705	Enhancement to merge score lines with web routes
Panel Tool	53704	Enhancement to display custom drills
Panel Tool	53684	Enhancement to easily and quickly create chamfered corners on assembly panels
Panel Tool	53679	Performance improvements for the Panel tool on complex pcb designs
Panel Tool	53678	Enhancement to support scaling of a panel
Panel Tool	53677	Some dialogues in Panel tool display in inches only, independent of overall formatting
Panel Tool	52951	Enhancement to be able to scale the panel size like you can a pcb view

Product/Project	ID	Description
Panel Tool	50304	Enhancement to clean up the display of Web routes extending into boards on the panel
Panel Tool	49846	Enhancement to support the documentation of Flipped Panels
Print	54258	Printing incorrect for Component fill hatch
Tools Dimensioning	54101	Align Dimension RMB cmds work only on Dimension text
Tools Dimensioning	54100	Enhancement to add user control of snapping indicator line width
Tools Dimensioning	54010	Angular Dimension does not move with PCB View
Tools Dimensioning	54004	Angular Dimension: outer angles on Board Outline
Tools Dimensioning	53937	Enhancement for Coordinate Dim to automatically add a dogleg
Tools Dimensioning	43647	Enhancement request to be able to dimension the actual board width in a side view
User Interface	54259	Problem with saving customization
User Interface	54183	BluePrint occasionally fails when searching for words of different case in title blocks
User Interface	54175	Edit controls not visible on Japanese Windows
User Interface	54024	Overlapping Ref Des - false errors
User Interface	54008	All stackups placed 6 inches below cursor
User Interface	53974	Template select: preview by file name only
User Interface	53928	Search filter for Current Sheet Only
User Interface	53927	Search Highlight Color option
User Interface	53926	Command icon support for Search pane functions
User Interface	53913	Enhancement to highlight Floating on the drawing
User Interface	53799	PCB View Display Order - is not retained on cut and paste
User Interface	53710	Enhancement to indicate snapping when dragging score line
User Interface	53646	Would like more granularity in defining reference designator sizes
User Interface	53645	Enhancement for a search option to find overlapping reference designators
User Interface	53611	Finger connector bottom side display is incorrect on certain designs
User Interface	53592	Improvement to Component Format Dialogue
User Interface	53585	Cannot change pin color in PCB View on this design database

Product/Project	ID	Description
User Interface	53512	Enhancement to auto align coordinate dimension lengths
User Interface	53497	Hyperlinked VALUES in parts list do not work
User Interface	53492	Enhancement to Disperse callouts
User Interface	53491	Enhancement to align callouts based on callout shape
User Interface	53288	Enhancement to save User Interface customizations and share on other user pc's
User Interface	53274	New functionality to save and restore user defined menu and toolbar customization
User Interface	53253	Enhancement to allow the User to change the display order of layers and elements in a PCB View
User Interface	53201	Callout Style lost when linking to note
User Interface	53122	New functionality to save and restore user defined menu and toolbar customization
User Interface	51456	Enhancement to allow the User to change the display order of layers and elements in a PCB View
User Interface	45404	Enhancement to have component formatting applied to all components of same type
User Interface	41953	Enhancement request to save BluePrint Menu and Toolbar customizations to a file