



Release Highlights for BluePrint 5.2

Introduction

BluePrint Release 5.2 is the latest in customer driven releases. All new features and enhancements were requested by existing customers. Over the preceding year, DownStream Technologies queried our customer base for new ideas or enhancements to existing features. Each release of BluePrint contains many user requested features as well as quality enhancements.

New Functionality

The following functional enhancements are contained in BluePrint Release 5.2.

- **General BluePrint Updates**
 - Default Pattern for Shape Fills**
 - Origin for Grouped Shapes**
 - Callouts – Leader Originates from Center of Round Balloons**
 - Callouts – Multiple Leader Support**
 - Collection of Callouts**
 - Layer Stackup – Layer Thickness Dimension**
 - Side and Exploded View Selection Filter**
 - Substituted Parts Table for Variant Parts Lists**
 - Hidden Setting for User Parts in a Parts List**

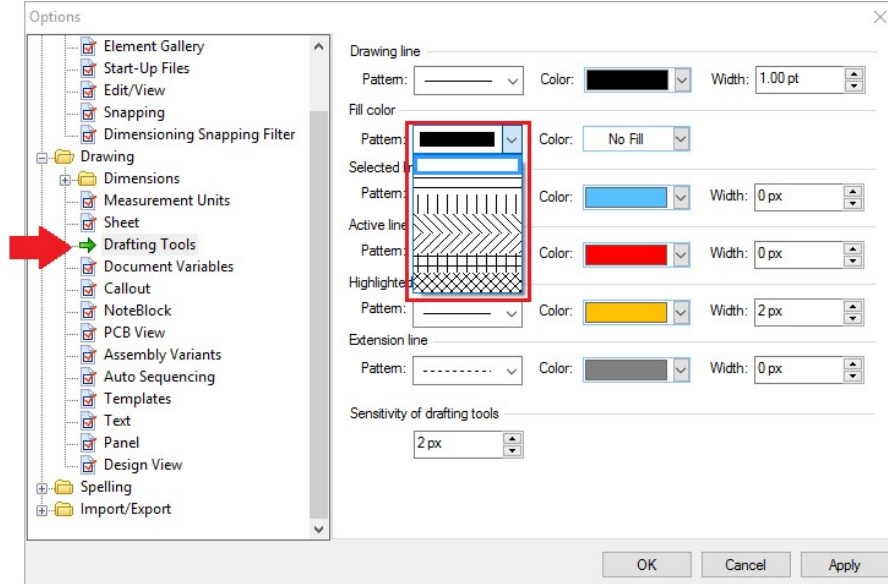
- **Panel Editing Updates**
 - Panel Coordinate Dimensions on Panel Ribbon**

New Functionality Details

Default Pattern for Shape Fills

Fills assigned default pattern when added to a drawing

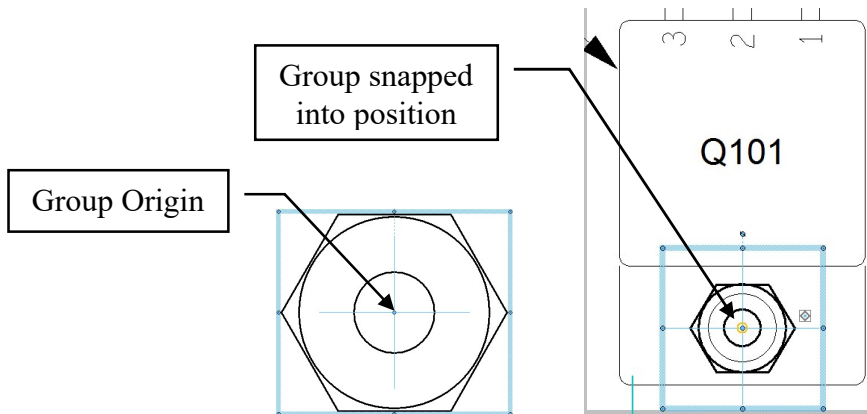
A default Fill pattern can be set in the Options dialog for Fills (57799).



Origin for Grouped Shapes

Grouped Object origin can be adjusted to a specific location

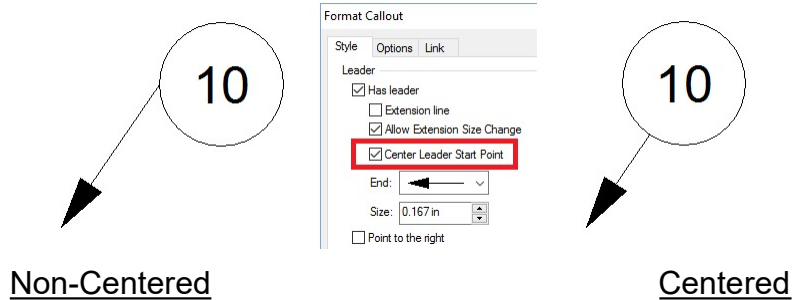
A movable origin marker for group objects for use with object snapping. Group origin serves as snapping point for group (52976).



Callouts – Leader Originates from Center of Round Balloons

Set the Leader to project from the center of a Round Balloon

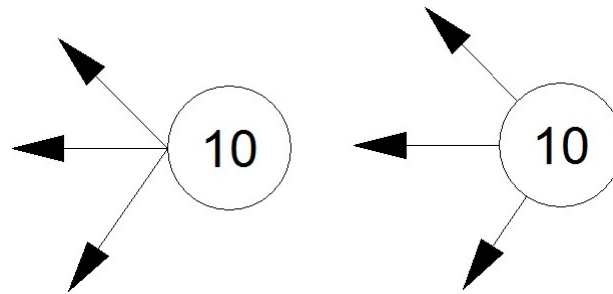
Leaders for Callouts having round balloons are projected from the center of the balloon when the **Center Leader Start Point** option is enabled (53698).



Callouts – Multiple Leader Support

Use Add Leader command to add additional leaders to callouts

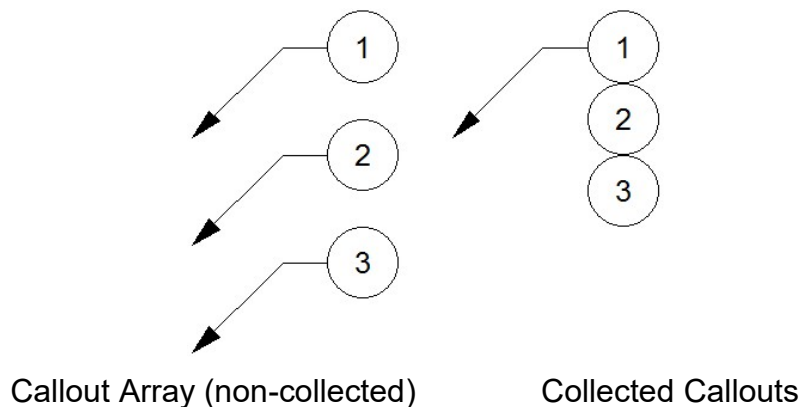
Use the Add leader command to add additional leaders to any callout (53698).



Collection of Callouts

Create a collection of callouts with a common leader

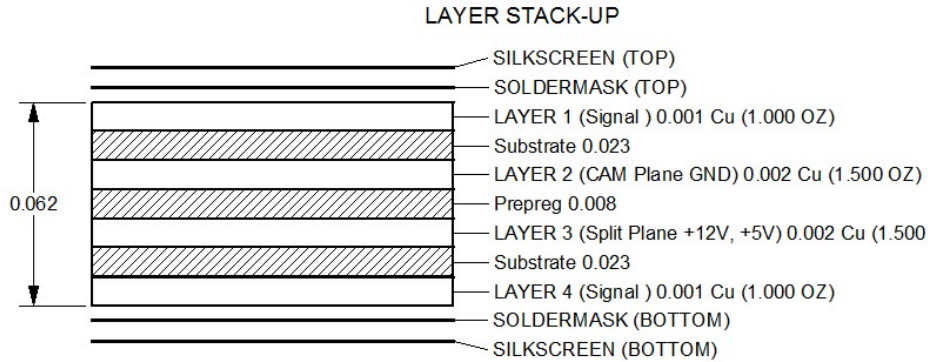
Use the collect callout command to select and combine any number of callouts into a singular callout collection. Callouts can be collected horizontally or vertically (53331).



Layer Stackup – Layer Thickness Dimension

Display a layer thickness dimension one a layer, via or backdrill stackup.

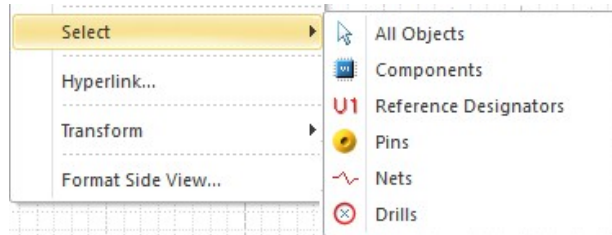
Any Stackup can be displayed with a layer thickness dimension. Layer thickness value can be derived from CAD data or specified in Data Manager. Dimensions can be formatted to your documentation standards. (54093)



Side and Exploded View Selection Filter

Make specific selections of objects in Side Views, Details and Exploded Views

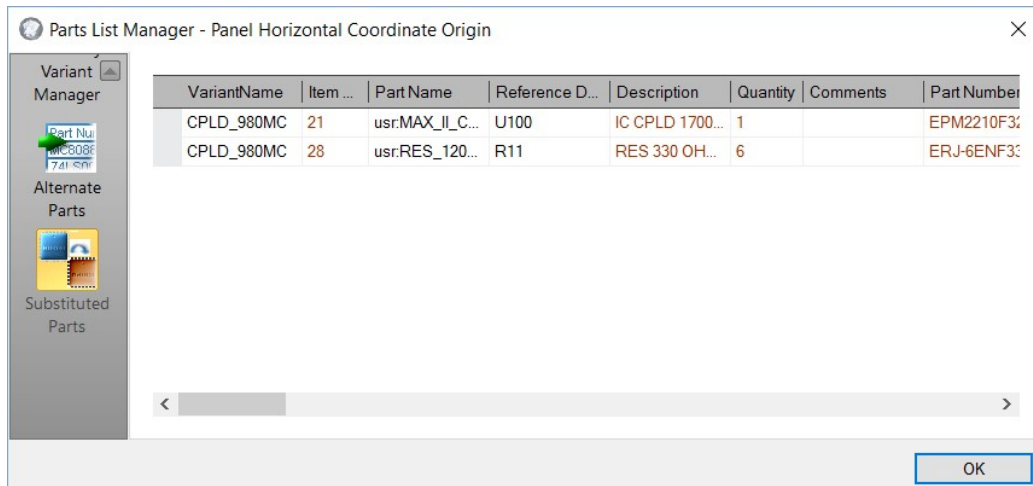
Select a Side View, Detail or Exploded View and choose Select from the pop-up menu to filter the selectable objects. (57783)



Substituted Parts Table for Variant Parts Lists

Use the Substituted Parts Table to Manage Substituted Parts

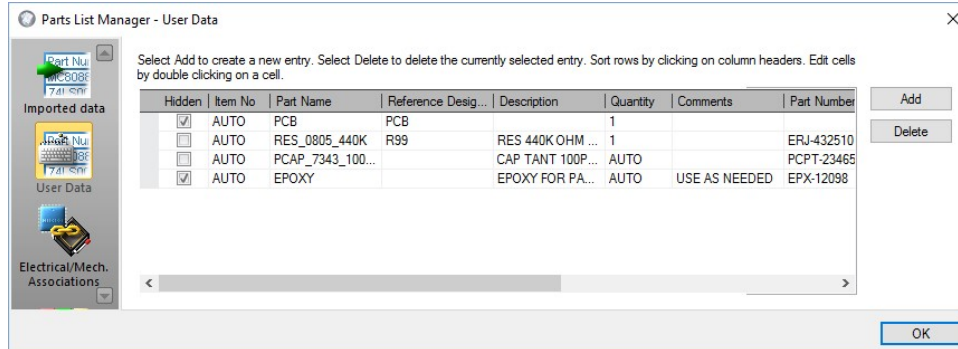
The Substituted Parts table is for managing all Part substitutions made in any assembly variant. The table entries provide access to set part properties such as Description, Quantity and other attributes.



Hidden Setting for User Parts in a Parts List

Set user part visibility for inclusion/exclusion in parts lists

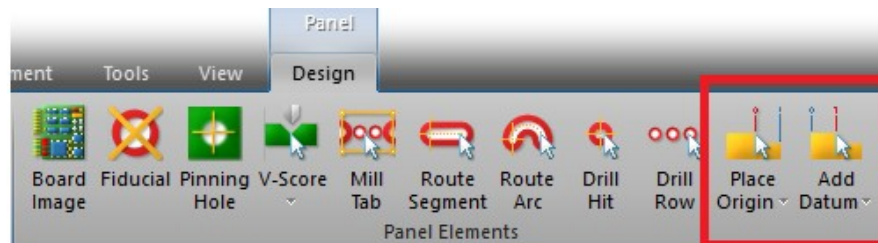
User parts added to the Part List Manager can now be hidden to exclude them from appearing in parts lists. The hidden setting can be set independently for each drawing.



Panel Coordinate Dimensions on Panel Ribbon

Access to Panel Coordinate Dimensions via Panel Ribbon

Horizontal and vertical Panel Coordinate Dimensions are accessible from the Panel Ribbon. When activated, BluePrint remains in the selected dimension command until Esc is pressed. This facilitates simplified addition of multiple datum dimensions. (58352).



Defect Fixes for BluePrint 5.2

Software corrections and enhancements have been made to previously existing functionality, further improving upon BluePrint's quality and reliability:

Build 1255

Functional Area	ID	Description
File Open	59213	Crash on File Open for very small Exploded View detail.
File Import	59093	File Import Parts List CSV performance improvement for BPD file with many Assembly Variants.
Common Elements	59040	Changing net colors in PCB View affects all PCB Views.
Common Elements	59215	Note Block line spacing is incorrect when spacing is not set by Font size.
Common Elements	43652	Random Note Blocks cannot be merged together.
Macro Scripting	59214	Automation API cannot snap one of two ends of a horizontal dimension to drawing element.
Panel Drawing	59212	Components overhanging board edge are incorrectly clipped in assembly display of panel drawing.
User Interface	59127	Alt-GR key stroke as European keyboard modifier causes text entry problems.
User Interface	58432	English version on native Japanese Windows OS displays property page dialogs incorrectly.

Build 1247

Functional Area	ID	Description
File Open	58883	For Windows 10 Version 1703, the File Open command crashes when opening a BPD file.
File Open	58460	File Open latency; each file in MRU list is searched on start of File Open..
ODB++ Import	58878	ODB++ import crash on Expedition ASCII JobPrefs file with Japanese multi-byte text.
ODB++ Import	58466	ODB++ import dialog latency for WAN drive access.
ODB++ Import	58880	Altium ODB++ import support for Metric units in TOOLS file for NC data.
IPC-2581 Import	58799	Altium IPC-2581 import inverts arcs for corners for board outline.
Variant List Import	58885	CSV Import as Variant does not update attributes for substituted parts.
Publish To Web	58881	Publish To Web fails – HTML ActiveX binaries files are placed in the wrong folder in the CAB file.
File Export Comp Coordinate List	58814	Wizard settings for File Export Component Coordinate List are not remembered for successive executions.
Common Elements	58801, 58678	For a Drill Chart, Insert Reference to a Note causes crash.
Common Elements	58879	Drill Chart Table Template expansion is incorrect when a Callout is inserted into the table header.
Common Elements	58467	Component fills are incorrect for variants for complex component outline shapes..
Common Elements	58827	Document Variable Edit dialog updates cause BluePrint to crash.
Common Elements	58620	Automatic conversion of table template text to URL hyperlinks on table expansion.
Panel Drawing	58882	Panel images shift on add web route if overhanging components exist..

Build 1235

Functional Area	ID	Description
File Open	58677	File Open command crashes when opening a BPD file with a callout that is snapped to a Side View detail..
PADS ASCII Import	58661	PADS ASCII import incorrectly loads soldermask and copper
PADS ASCII Import	58664	PADS ASCII import - inner layer pads are not removed for flooded Hatch Outlines
File Import PDF	58647	PDF Import will not convert files when CMAP Encoding errors occur.
File Export DXF	58644	File Export DXF cannot save file to a network drive
File Export PDF	58648	File Export PDF changes Italics to normal font on output.
Common Elements	58678	Insert Reference to a Document Variable does not work for BluePrint 5.2J Japanese version
Common Elements	58665	Changing units in the Options dialog causes loss of data in Layer Stackup display
Common Elements	58667	The Note number is changed from 3.2 to 32 when adding a reference to a note.
Panel Drawing	58671	The Add Web Route command creates a web route that does not hug a board outline that has large segment arc approximations.
Panel Drawing	58679	Route segment extents are incorrect and Panel Drawing extents are then too large

Build 1233

Functional Area	ID	Description
File Open	58643	File Open command is slow for converting BluePrint 5.1 BPD file to 5.2 BPD file with many Process Step Charts.
ODB++ Import	58617	Expedition ODB++ import does not display slots for via definitions in ODB++ file.
ODB++ Import	58446	UNC path cannot be found in ODB+ import dialog for large WAN network when Network Discovery is off for Windows Explorer.
IPC-2581 Import	58636	File Import IPC-2581 command fails to complete for

		designs with multiple dielectrics between copper layers.
IPC-2581 Import	58615	File Import IPC-2581 for Zuken files incorrectly merges Silkscreen and Assembly data into component outlines.
IPC-2581 Import	58534	File Import IPC-2581 fails for large file.
IPC-2581 Import	58635	SMD and THRU component Mount Type is incorrectly set for IPC-2581 file.
IPC-2581 Import	58549	Text position display is incorrect on graphics layer after File Import IPC-2581 command.
Parts List Import	58548	File Import Parts List CSV command does not display part number.
Variant Import	58536	Substituted part numbers are incorrect for File Import Parts List as Variant command.
Common Elements	58632	Angular dimension degree symbol is lost after invoking Format Drawing Element dialog.
Common Elements	58523	Fonts from PADS ASCII import have incorrect filled patterns.
Common Elements	58467	Component outline fills are incorrect for outlines with multiple nested closed polygons
Common Elements	58578	A small drawn circle incorrectly displays a stub on the right side of the circle
Common Elements	58599	For a group of small items, the group extent is large than the actual extent of the items. The group extent is artificially enlarged to include the group origin symbol.
Common Elements	58591	The Draw Polyline command crashes BluePrint when automatically panning at the graphics port edge.
Variant Manager	58545	New (Copy From) creates variant from which part numbers are not display properly.
Parts List Manager	58544	Parts List Manager does not display correct Part Number for Assembly Variant
Parts List Manager	58589	Substituted Part table fields disappear when sorting by column headers.
Parts List Manager	58598	Substituted Part table row sort is incorrect when sorting by column headers.
Panel Drawing	58588	The Add Web Route command hangs for board outline shape with small notches.

Build 1227

Functional Area	ID	Description
ODB++ Import	58530	ODB++ import fails to import Expedition file with complex polygon
IPC-2581 Import	58526	IPC-2581 import Zuken CR8000 false errors for duplicate drills
File Open	58511	Crash in 5.2 when loading BluePrint 5.1 BPD file
Fab Drawing	58528	Via Stackup template does not remember graphics order
User Interface	58527	Allegro 17.2 crashes when selecting BluePrint-PCB link menu items

Build 1224

Functional Area	ID	Description
PDF Export	58181	Exported PDF rotates a side view incorrectly
PADS Import	57922	Crash in 5.1 on loading this PADS file, 4.0 loads it
PADS Import	58266	Bad Thermal pad on PADS ASCII import
PADS Import	58072	Design does not import
PADS Import	58393	Rounded rectangle failure
Variant Manager	58053	Ref des changes color on open variant manager
Parts List	58267	Cannot set precision display for User Part Quantities
Gerber Import	58318	Added FPH extension to Gerber list for Zuken CR8000
ODB++ Import	58326	ODB++ import – decals not associated with components
ODB++ Import	58204	ODB++ import does not recognize layer order for ODB++ 8.0 version
Print to PDF	58183	Print PDF – Copper Island is dropped
Templates	58351	Flipped panel template does not display components
Panel Drawing	58396	Panel Coordinate dimension displays incorrect element count

Patents, Copyrights, and Trademarks

Patents

“AUTOMATED PCB MANUFACTURING DOCUMENTATION RELEASE PACKAGE SYSTEM AND METHOD”, United States Patent No. 7,409,666 B2

“ADAPTIVE TEMPLATE SYSTEM FOR AN AUTOMATED PCB MANUFACTURING RELEASE PACKAGE SYSTEM”, United States Patent No. 8,875,072 B2

Copyrights

Copyright© 2005-2016 by DownStream Technologies, LLC. All rights reserved.

This information is copyrighted; all rights are reserved by DownStream Technologies, LLC. This information may not, in whole or in part, be copied, photocopied, reproduced, translated or reduced to any electronic medium or machine-readable form without the express written permission of DownStream Technologies, LLC.

DownStream Technologies, LLC, 225 Cedar Hill Street, Marlborough, Massachusetts 01752

Trademarks

BluePrint , BluePrint-PCB , BluePrint for Printed Circuit Boards , and CAM350 are registered trademarks of DownStream Technologies, LLC. Adaptive Templates™ is a trademark of DownStream Technologies, LLC. Adobe, Adobe PDF Library, Adobe logo, Acrobat, PostScript, and Photoshop are either registered trademarks or trademarks of Adobe Systems Incorporated. The Postscript language is copyrighted by Adobe Systems Incorporated. DXF and Autodesk are registered trademarks of Autodesk, Inc. FLEXIm is a registered trademark of Macrovison Corporation. Omnify is a registered trademark of Omnify Software. Microsoft, Windows, Microsoft Paint, Microsoft Word, Microsoft PowerPoint, Microsoft Excel are either registered trademarks or trademarks of Microsoft Corporation. All rights reserved.

All other trademarks or registered trademarks are the property of their respective owners.

We have done our best to ensure that the material found in this publication is both useful and accurate. However, please be aware that errors may exist in this publication, and that neither the authors nor DownStream Technologies, LLC make any guarantees concerning the accuracy of the information found here or in the use to which it may be put.